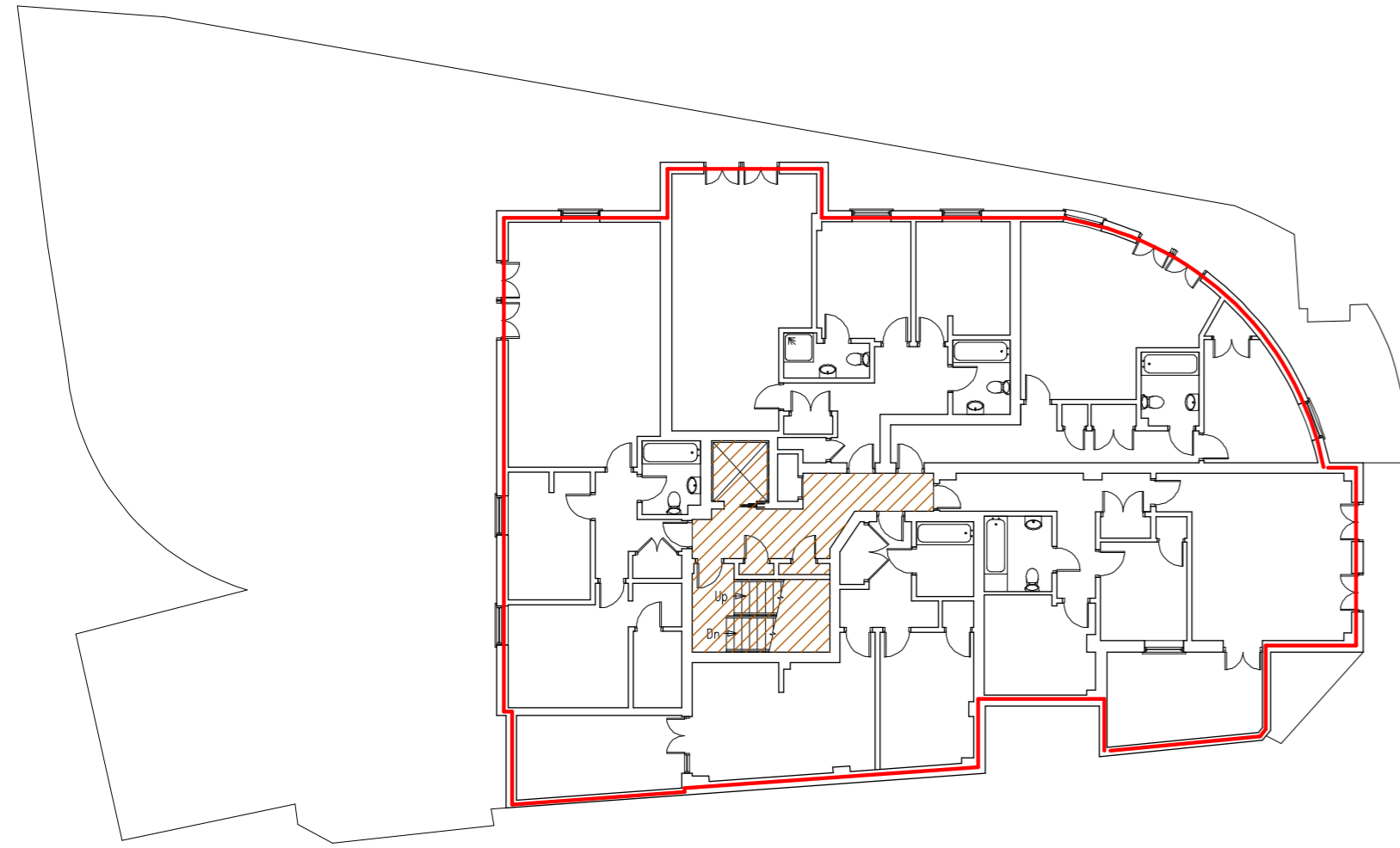
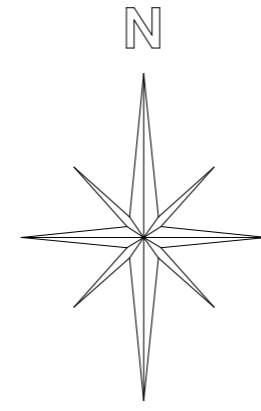
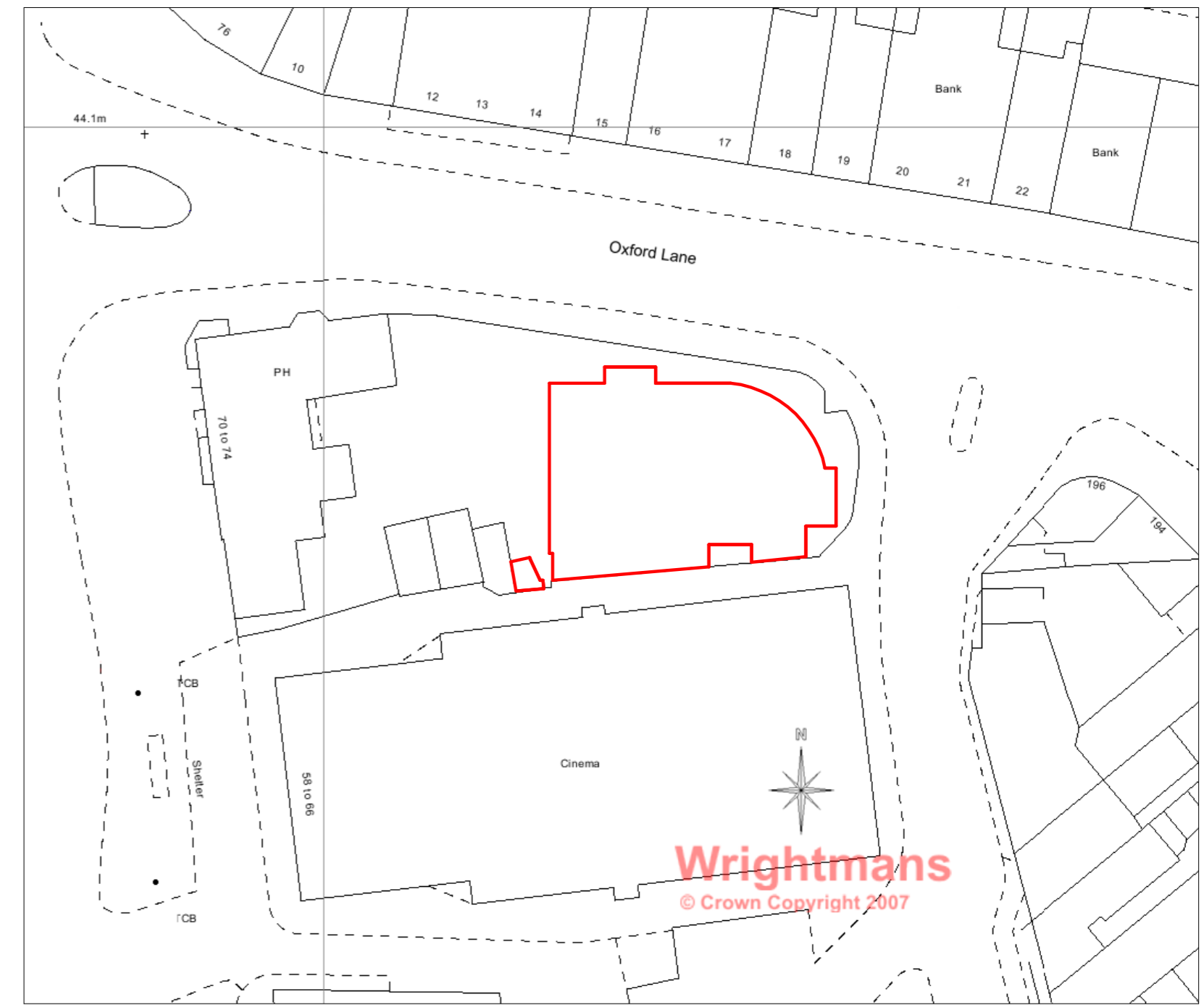


Lease Plan



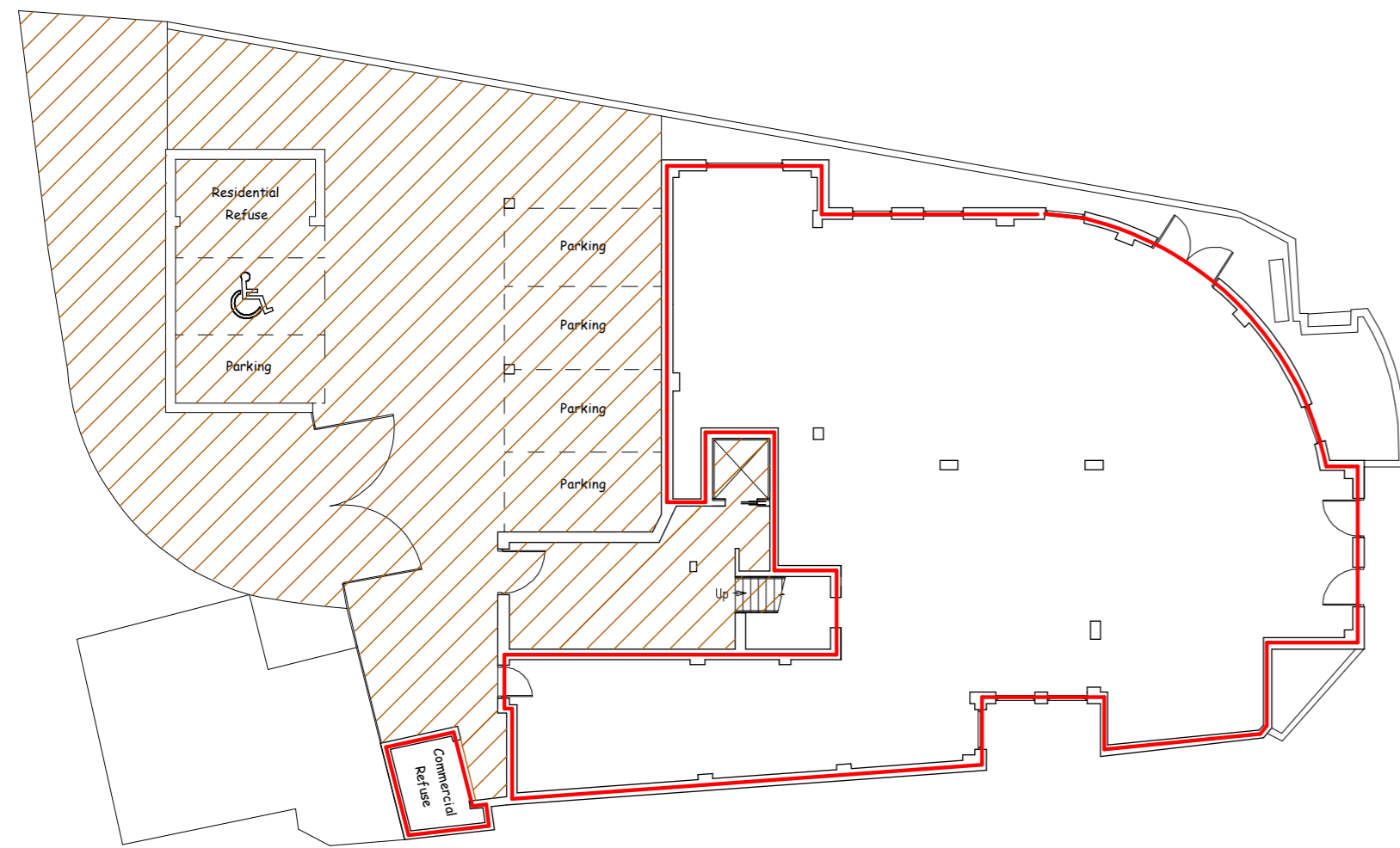
Scale 1:200

First Floor
Harrow Views
Oxford Lane
Buckinghamshire
SL7 5PL



Scale 1:500

Location Plan



Scale 1:200

Ground Floor
Harrow Views
Oxford Lane
Buckinghamshire
SL7 5PL

NOTES

The areas edged in red on the Plan represent that to which the Lease refers for the property known as Harrow Views, Oxford Lane, Buckinghamshire SL7 5PL.

The areas hatched in brown on the plan are communal and used for access and egress.

Wrightmans
Land Registry Compliant Plans

Villiers House
110 Villiers Road, Oxhey Village, Herts WD19 4AW
T: 01923 211 421 - F: 05601 140158
Email: info@wrightmansplans.co.uk
Website: www.wrightmansplans.co.uk

DRAWING TITLE
Lease Plan for premises at
Harrow Views
Oxford Lane
Buckinghamshire
SL7 5PL

SCALE	DATE	DRAWN BY	APPROVED BY
1:200 1:500	22/02/2008	B.K.	K.S.

DRAWING NUMBER	REV
WP1462	
Additional copies of these Plans are available on request. We do not recommend submitting anything other than our original plans to the Land Registry as most reproductions will be rejected due to distortion and scaling inaccuracy.	SIZE A2